

ASX Announcement

4 April 2016

Investor Update

Superloop Limited (**ASX:SLC**) is pleased to provide the following update on the Group's first full operating quarter ("Maiden Quarter") to shareholders, with the key highlights being:

- sales in excess of \$2.3m of annualised revenue, with 75% of revenue coming from Superloop assets;
- Achievement of the market guidance provided at the Group's Annual General Meeting of \$10m of contracted annualised revenue during the quarter, a quarter earlier than forecast;
- Construction of the Hong Kong Network has commenced, with first sections of network installed in TKO Science and Technology Park;
- The launch of two new products, Ethernet Backhaul and Wavelength;
- An update on the progress of the integration of ApexNetworks and Cinenet

The Group is pleased with the strong start to the 2016 calendar year, and looks forward to providing further updates to shareholders when the Group releases its full year results for the financial year ended 30 June 2016 in August 2016.

ADDITIONAL INFORMATION

For further comment or other information please contact:

Investor enquiries:

Telephone: +61 7 3088 7300

Email: investor@superloop.com

Media enquires:

Telephone: +61 7 3088 7388

Email: media@superloop.com



About Superloop

Established in 2014, Superloop is a telecommunications infrastructure group focused on becoming a leading independent provider of connectivity services in the Asia Pacific Region.

Bringing innovation to infrastructure, Superloop is building new, independent dark fibre networks to large network providers and enterprises by connecting key points of presence in key Asian markets, such as Australia and Singapore.

Superloop's initial key assets include a 15-year exclusive right to a 130 kilometre fibre network within Brisbane, Sydney and Melbourne connecting many of the key data centres within those metropolitan areas.

The Company owns and operates a strategic underground duct network spanning approximately 120 kilometres in the Asian telecommunications hub of Singapore. The Singapore fibre optic network interconnects major data centre and submarine cable landing station locations including Equinix SG1, SG2, Global Switch, Digital Realty (Jurong), Katong and Tuas Cable Landing Stations, and will soon directly connect to Equinix SG3.

Recently the group acquired APEXN and CINENET.

APEXN, which trades as APEXnetworks, is a Brisbane based leading provider of complete network services and solutions. APEXnetworks offers the Company's Channel Partners and Customers the ability to manage their network services with access to a wide product set, a service qualification tool, with everything managed via an in-house designed Network Management System and hosted Web Portal product.

CINENET is Australia's only high-speed broadband data network created specifically for screen media industries. It's a shared, connected infrastructure for studios, producers, editing facilities, visual effects providers, sound facilities and DVD producers to create and exchange large digital assets and connect to infrastructure providers.

For more information, visit: www.superloop.com, www.apexnetworks.com.au and www.cine.net.au

Investor Presentation

4th April 2016



superloop



Performance Update

QUARTER PERFORMANCE OF “MAIDEN QUARTER”

- ▶ First full quarter post network construction in Singapore and Australia or “Maiden Quarter”
- ▶ Achieved over **\$2.3m of new annualised revenue** last quarter
- ▶ 75% of new recurring revenue from Superloop assets
- ▶ Contracted sales on **Superloop assets achieving 85%+ GP margin** improving company’s GP position
- ▶ Significant **increase in Singapore sales opportunity** pipeline as carriers are aware of network completion and immediate service availability in key data centres/landing stations.
- ▶ ApexN network customer and revenue growth continues
- ▶ Company has now achieved **\$10m of annualised contracted revenue** - one quarter earlier than forecast. Revenues will be recognised upon service provisioning.

INTEGRATING APEXN & CINENET

- ▶ Network integration currently at 80% with full network integration **expected to be completed by June 30**
- ▶ All new services for group companies **now using Superloop 360 platform** (previously ApexN's NMS platform)
- ▶ Full **automated billing integration** expected for July 1 billing date
- ▶ ApexN products **now available** across all business units





Infrastructure Update

INFRASTRUCTURE UPDATE

- ▶ All Networks in Australia are **LIVE**
- ▶ Singapore Network is LIVE and is EXPANDING to including **Singapore Stock Exchange, iO and NTT** data centres on the back of new customer orders of totalling more than \$750,000 per annum.
- ▶ Project Red Lion **delivering on-net footprint** across approximately **60 key enterprise buildings** with 13 buildings already connected. A further 60 buildings are being investigated for possible later inclusion.
- ▶ Hong Kong fibre optic **network construction underway** with the first cable segments being installed in TKO
- ▶ TKO Express - the domestic submarine cable crossing project remains **on track for a Dec 2016 completion**, with the project having secured critical environmental permits with no objections.
- ▶ Daniel Abrahams appointed to Chief Infrastructure Officer to **lead delivery of Project Red Lion** and HK Network Roll-Out

SINGAPORE NETWORK / LIVE

Singapore & CBD



DATA CENTRES & CABLE LANDING STATIONS

- ▶ Equinix SG 1 - 20 Ayer Rajah Crescent
- ▶ Global Switch - 2 Tai Seng Avenue
- ▶ Equinix SG 2 - 15 Pioneer Walk
- ▶ Digital Realty - 29A International Business Park
- ▶ Equinix SG 3 - 28 Ayer Rajah Crescent
- ▶ RacksCentral - 23 Tai Seng Drive
- ▶ Katong Cable Landing Station
- ▶ Singtel TUAS Cable Landing Station

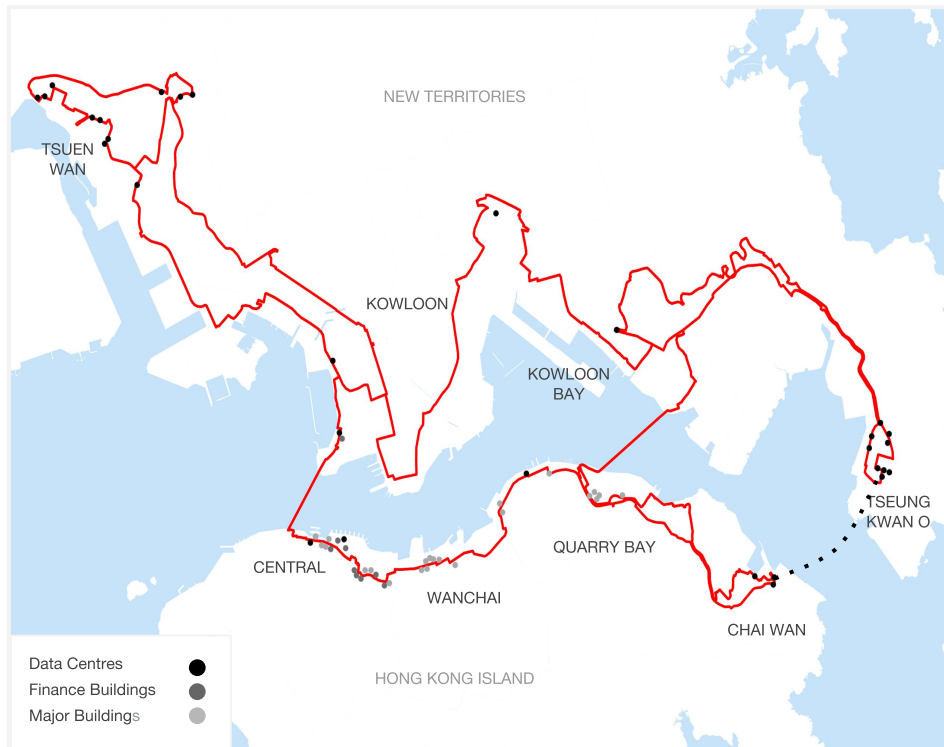
BUSINESS & TECHNOLOGY PARKS

- ▶ Central Business District
- ▶ Suntec City
- ▶ Mapletree
- ▶ Fusionopolis/Mediapolis/Biopolis
- ▶ Kingsland

ENTERPRISE BUILDINGS / ON NET

- ▶ 13 strategic commercial enterprise buildings

HONG KONG CORE NETWORK / LIVE DECEMBER 2016



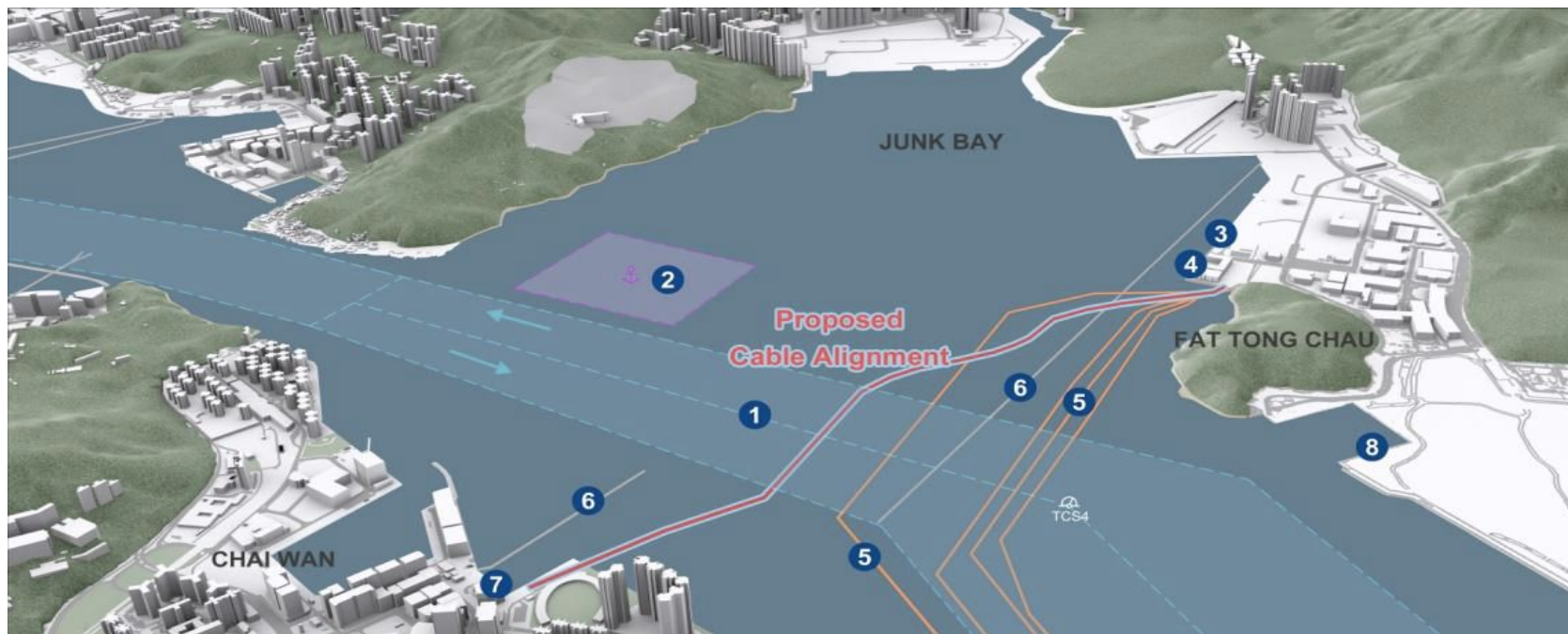
KEY INFORMATION

- ▶ Approximately 110 km of Fibre
- ▶ 2 x 1000 core fibre cables
- ▶ 30 High Value Buildings on completion of the network
- ▶ Diverse Building entries where possible
- ▶ East Tunnel Crossing
- ▶ West Tunnel Crossing
- ▶ TKO Express providing short, direct path between Tseung Kwan O and Chai Wan

PROGRESS REPORT

- ▶ Core Network Duct Testing substantially completed
- ▶ First 1000 Core cable segments being installed
- ▶ Network roll-out progress ahead of schedule

TKO EXPRESS / SUMMARY



GROWING APAC NETWORK COVERAGE

In less than 12 months



1	Brisbane	10km	LIVE
2	Sydney	96km	LIVE
3	Melbourne	28km	LIVE
4	Singapore	132km	LIVE
5	Hong Kong*	110km	DEC 16

* Hong Kong network is being constructed in 2016



New Products

NEW & UPCOMING PRODUCTS



'Superloop "360" powered by APEXN'



Superloop Wavelength for SG Cable Landing Stations launched and live Q2



Superloop Ethernet Backhaul product launched live Q2

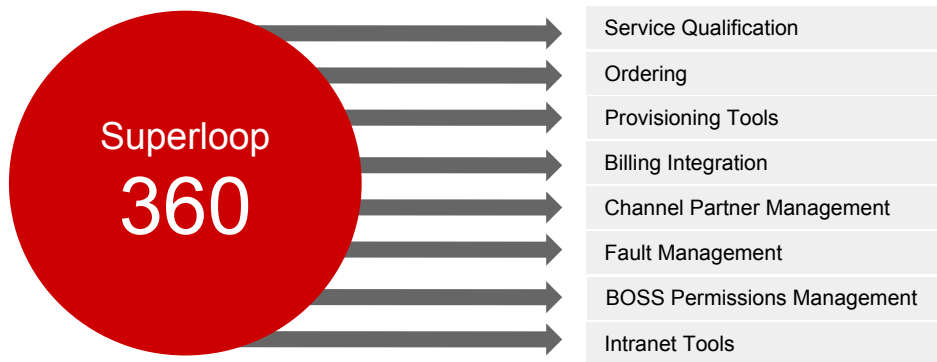
WHAT IS Superloop 360?

PUTTING NETWORK SOLUTION CONTROL WITH THE CUSTOMER

- ▶ 360 (nee. APEXn NMS) is the service delivery and support portal that Superloop acquired during the APEXNetworks transaction.
- ▶ Integration work rapidly progressed to deliver back-end system automation and ROI.
- ▶ 360 enables end-to-end workflow, ordering and support tools, along with customer logins and interaction.
- ▶ 360 will provide greater engagement, transparency and visibility with our customers.

INVESTMENT PAYBACK - ROI

- ▶ 360 has fast-tracked Superloop's portal capability and time to market.
- ▶ Provided a solid platform to deploy a customer portal across the APAC Region.
- ▶ Potential opportunity to integrate multiple vendor solutions into a single, integrated wholesale management platform.



EXPANDED PRODUCT SET



DARK FIBRE

LIVE

Dark Fibre is a dedicated fibre-optic connection between two end-points. The fibre is provided without any transmission equipment. The customer has the freedom to deploy and maintain any hardware of their choice to fit their business needs, even if they change during the contract term.



ETHERNET BACKHAUL

Q2 2016

Ethernet Backhaul is a layer 2 point-to-point service connecting two sites using Ethernet. It is a carrier centric service delivered over a high capacity and low latency Ethernet core. The Ethernet core is protected over Superloop's diverse fibre paths. Bandwidth capacity can be easily scale between 1Gbit/s to 10Gbit/s.



WAVELENGTH

Q2 2016

Wavelength provides a dedicated circuit provisioned between two locations using dense wavelength division multiplexing (DWDM) technology and Superloop's fibre network. Interface support includes both Ethernet and SDH in increments between 10GBits/s and 100Gbit/s.



ETHERNET ACCESS

Q3 2016

Ethernet is the preferred solution for many carriers and enterprise businesses to deliver their services to end customers and access the cloud. It is a trusted platform for providing reliable wide-area network (WAN) connectivity due to their cost-efficiency and scalability to support a broad range of applications.

LOOKING FORWARD

- ▶ Absolute focus on achieving EBITDA breakeven as quickly as possible
- ▶ Finalise acquisition integration to extract operational and cost synergies as fast as possible
- ▶ Launching indirect sales channels and partner programs to assist partners leverage our infrastructure for their customers
- ▶ Increased focus on marketing campaigns with particular focus on driving “on-net” sales .
- ▶ Continue to increase product development that leverages existing infrastructure and relationships for a greater “share of wallet”
- ▶ Increased frugality within the group
- ▶ Company looking at alternate funding sources namely debt for future network expansion and possible M&A activity



Questions